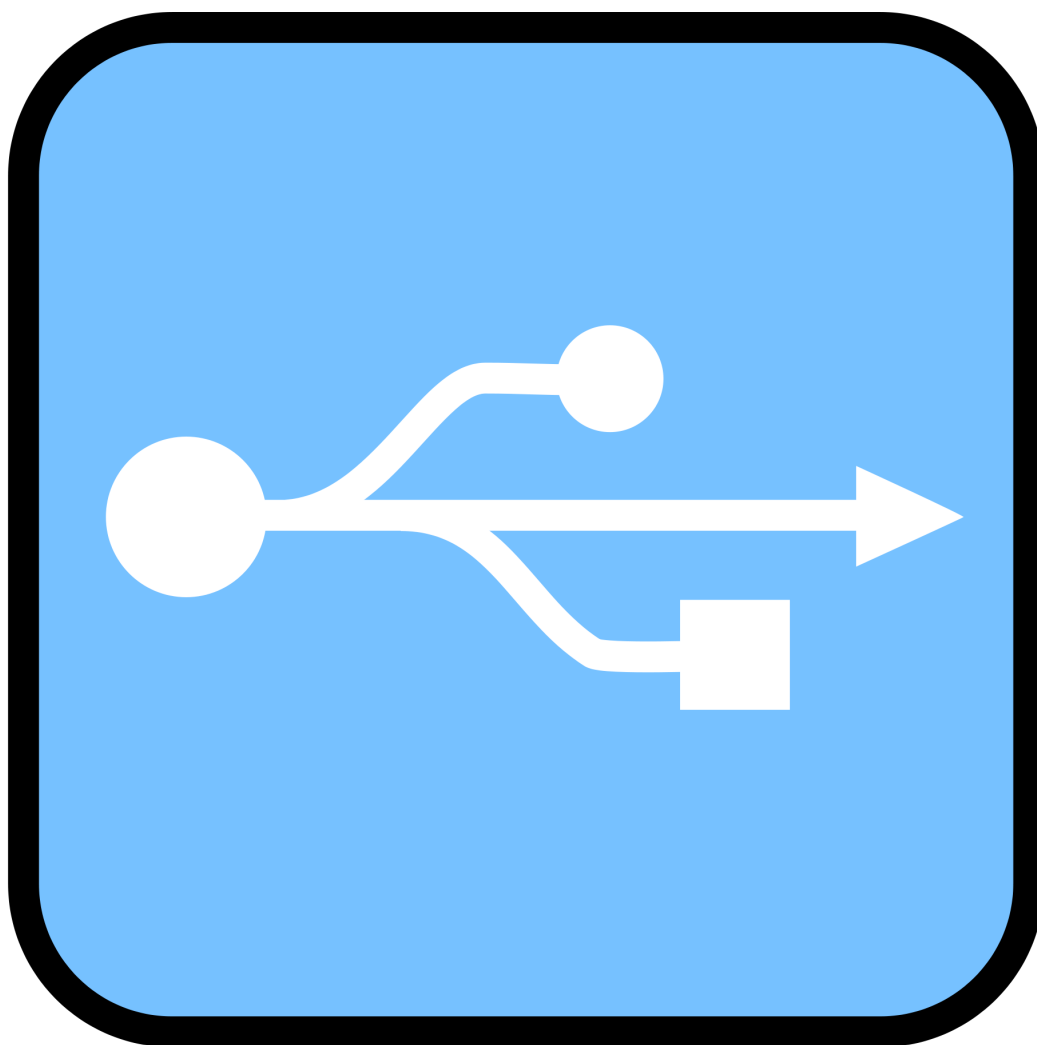


CASIO USB CRADLE DRIVER



Version 1.00

October 28, 2009

Contents

1	Prerequisites	3
2	Installation	4
2.1	Windows 2000 / XP (ACTIVESYNC Connection)	4
2.2	Windows Vista / 7 (WINDOWS MOBILE DEVICE CENTER connection)	8
3	Appendix	10
3.1	Support	10
3.2	Disclaimer	11

No part of this document may be produced or transmitted in any form or by any means, electronic or mechanical, for any purpose, without the express written permission of CASIO Europe GmbH. Information in this document is subject to change without advance notice. CASIO Europe GmbH makes no representations or warranties with respect to the contents or use of this manual and specifically disclaims any express or implied warranties of merchantability or fitness for any particular purpose.

© 2009 CASIO Europe GmbH. All rights reserved.

Editorial Record

Date	Version	Note
October 28, 2009	1.00	<ul style="list-style-type: none">• Initial Release

Chapter 1

Prerequisites

In order to successfully connect your CASIO DEVICE to a PC using the USB Cradle, your equipment must meet the following Prerequisites:

- PC running Windows 2000 or later.
- *Windows 2000 / XP*: ACTIVESYNC installed on the PC, latest version recommended.
ActiveSync is available for download from Microsoft (click to access Microsoft ActiveSync Website).
- *Windows Vista / 7*: WINDOWS MOBILE DEVICE CENTER installed on the PC, latest version recommended.
WINDOWS MOBILE DEVICE CENTER is available for download from Microsoft (click to access Microsoft Windows Mobile Device Center Website).
- CASIO DEVICE capable of connecting directly to a PC via USB (not via Infrared Cradle).
- Power supply for the Cradle.
- USB Cable.

Chapter 2

Installation

This chapter describes the installation steps required to connect your CASIO DEVICE to a PC using the USB Cradle.

2.1 Windows 2000 / XP (ActiveSync Connection)

1. Connect the USB cable to the PC and the other end to the USB Cradle and also the AC adapter to the USB Cradle.
2. Put your CASIO DEVICE on the cradle and confirm that the green LED on the front of the cradle is lit. If not, be sure your CASIO DEVICE is positioned firmly on the cradle.
3. When the CASIO DEVICE is mounted on the USB Cradle, a dialog is displayed to prompt you to install the suitable driver. If you have not yet obtained the driver files, browse to <http://www.casio-b2b.com/mis/euro/faq/> in order to do so.
4. Choose „No, not this time“ radio button in Figure 2.1 and then click „Next >“ button.



Figure 2.1:

5. Then, choose „Install from a list or specific location (Advanced)“ radio button in the menu.

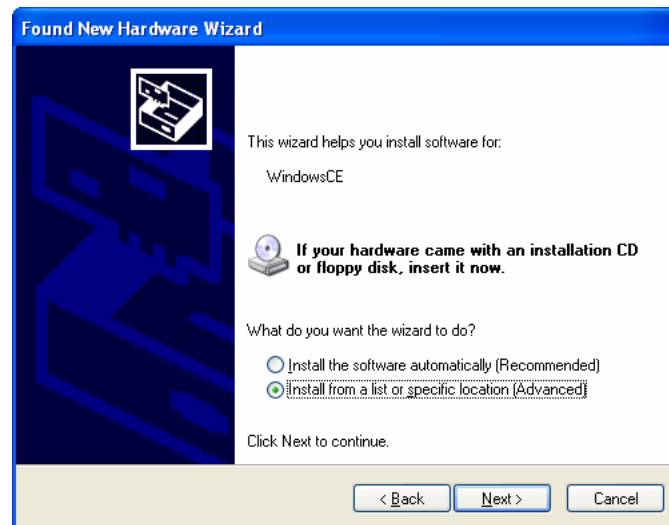


Figure 2.2:

6. Click „Next >“ button.

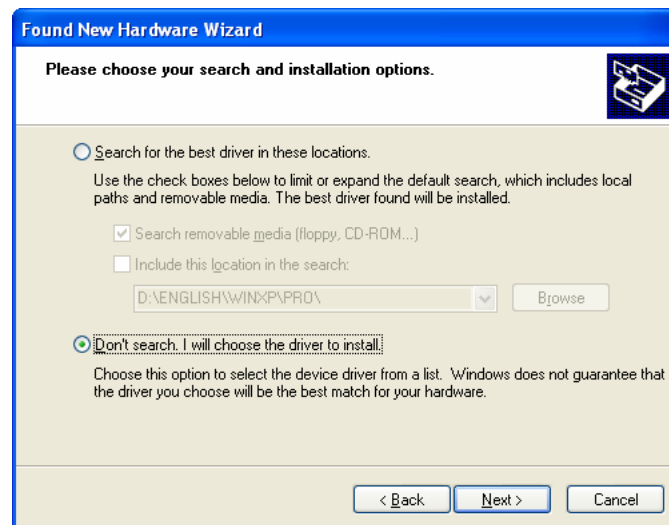


Figure 2.3:

7. Choose „Windows CE USB Devices“ icon.

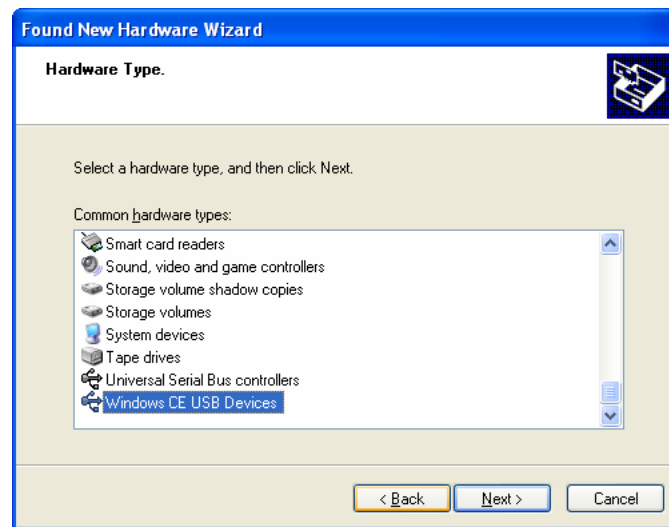


Figure 2.4:

8. Click „Have Disk...“ button.



Figure 2.5:

9. Click „Browse“ button. Select „wceusbsh.inf“ from the installation files folder of this package.

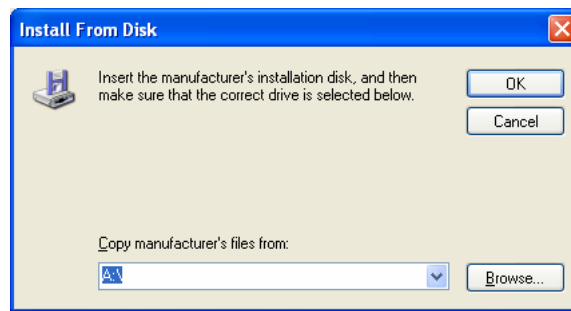


Figure 2.6:

10. The installation of the driver will start.

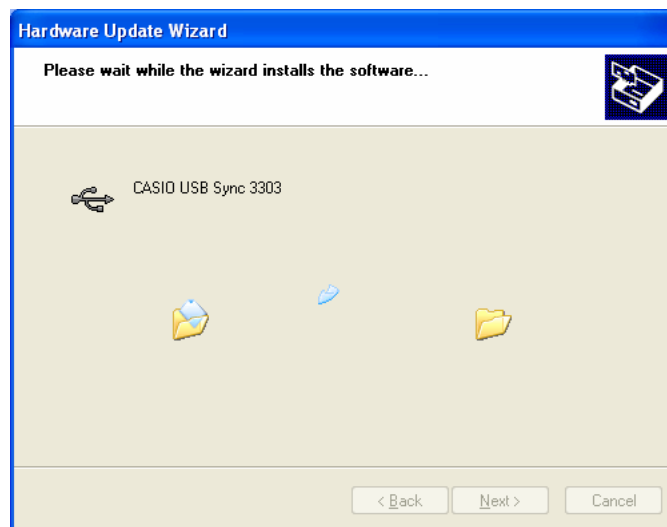


Figure 2.7:

11. If a Warning message like Figure 2.8 is shown, click „Continue Anyway“ button



Figure 2.8:

12. Now the installation of the driver is finished.



Figure 2.9:

2.2 Windows Vista / 7 (Windows Mobile Device Center connection)

To establish connection via USB interface with a PC which runs in Windows Vista / 7, use WINDOWS MOBILE DEVICE CENTER („WMDC“).

CASIO DEVICES running Windows Mobile 6.1 or later do support WINDOWS MOBILE DEVICE CENTER by default, hence the following steps are not necessary for those devices.

CASIO DEVICES running Windows CE .NET 4.1 or earlier do not support WINDOWS MOBILE DEVICE CENTER at all. Use LMWin to connect those devices to PCs running Windows Vista / 7.

CASIO DEVICES running Embedded Windows CE 5.0 or later with the factory-setting do not support the WMDC by default. Follow the procedure below to change the setting on the CASIO DEVICE.

1. Close all applications running on the CASIO DEVICE.
2. Navigate to „SETTINGS>CONTROL PANEL>USB CONNECTION“.
3. Click „CONNECT UTILITY“ tab.

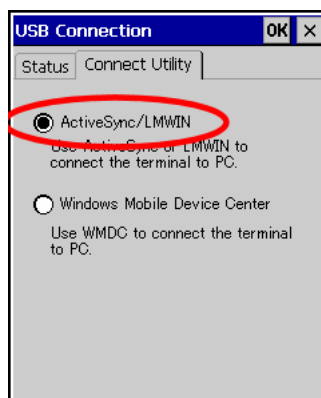


Figure 2.10:

4. Choose „WINDOWS MOBILE DEVICE CENTER“ radio button and then click „OK“ button.

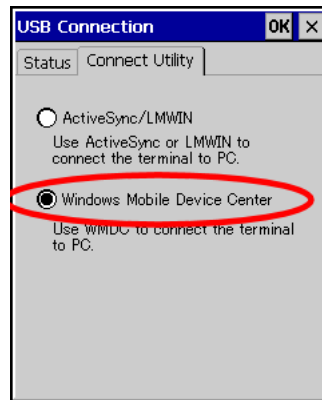


Figure 2.11:

5. A dialog asking your final confirmation appears. Click „YES“ button.

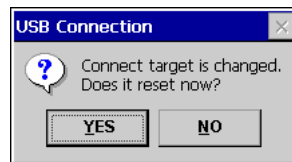


Figure 2.12:

6. The CASIO DEVICE starts up again.
7. Mount the CASIO DEVICE on the cradle, and then follow a message appeared in the WINDOWS MOBILE DEVICE CENTER on the PC.

Notes:

- To resume the factory default setting, choose „ACTIVESYNC/LMWIN“ radio button in Step 3 (see Figure 2.10), and start up the CASIO DEVICE again.
- The WINDOWS MOBILE DEVICE CENTER version 6.1 or later will support the connection establishment via USB interface. Any other versions of the WINDOWS MOBILE DEVICE CENTER earlier are not interoperable with Windows CE devices.

Chapter 3

Appendix

3.1 Support

We have conscientiously tried to make this manual complete, accurate, and easy to understand. We therefore ask that you spend a few minutes with the manual before asking assistance. A little reading and a bit of experimenting should answer your question. If you are still stuck, call Casio Europe technical support on the web at <http://www.casio-b2b.com>. Please note that Microsoft software product support is not offered through that address.

Include the following information when you write, or have it ready when you call.

- Your hardware and software configuration including version info.
- The exact wording of any messages that appeared on your screen.
- What you were doing when the problem occurred.
- How you tried to solve the problem.

The authors of this manual really care about its accuracy, completeness, and usability. If you have suggestions about improving the documentation, please tell us. We do listen.

3.2 Disclaimer

The CASIO USB CRADLE DRIVER is provided on an „as-is“ basis. Please carry out sufficient tests before using it in a critical environment. Information in this document is subject to change without notice and does not represent a commitment on the part of Casio Europe GmbH. The software described in this document is furnished under a license agreement. The software may be used or copied only in accordance with the terms of the agreement. It is against the law to copy the software on any medium except as specifically allowed in the license agreement. No part of this manual may be reproduced or transmitted in any form or by any means, electronic or mechanical, including (but not limited to) photocopying, recording, or information storage and retrieval systems, for any purpose other than personal use, without the express written permission of Casio Europe GmbH. Microsoft, Windows, and Windows Mobile are either registered trademarks or trademarks of Microsoft Corporation in the United States and/or other countries. This product does not come from nor is endorsed by Microsoft. All other product names are trademarks of their respective owners and are used solely for identification. We would like to stress that no programmers were harmed in the making of this software, they got sick on their own. However, a single keyboard and it's corresponding mouse were severely beaten to make this software and especially it's manual possible.

Casio Europe GmbH
Mobile Industrial Solutions
Casio-Platz 1
22848 Norderstedt
Germany
Copyright 2009
All rights reserved.